

Absolute Passability

Low-pressure tires

Aluminum wheels

Accessories and components

4 reasons

to choose AVTOROS tires and wheels

Recognized quality

Statistics of 10-year sales of tires and wheels confirms that their average lifetime is at least 5 years. The warranty of Avtoros is 12 months from the date of sale. This is the highest guarantee among manufacturers of low pressure tires and wheels.

Certification

To produce our tires and wheels we use only high-quality materials. Avtoros products have passed voluntary certification and are protected by patents, so purchasing our tires and wheels you can be sure of their reliability.



Free wheel assembly and shipping throughout Russia

Each customer, who makes an order, receives the assembled wheels for free. We cooperate with numerous transport companies and therefore delivery is carried out promptly throughout Russia.

Stock availability

After receiving the payment for the order, we ship the tires within 2 days and the assembled wheels within 3-4 days. Every customer receives his order as fast as possible.



M-TRIM tires

For SUVs and ATVs



M-TRIM tire is a new chance for the improving of SUVs. The tread pattern repeats the proven X-Trim tire tread pattern.

Reinforced side zone, enhanced grouser system 20 mm high and self-cleaning treads make these tires the most effective among their kind. The diameter of the tire (900 mm) allows you to install the wheels with minimal rearrangement of an SUV, while significantly improving its cross-country ability.

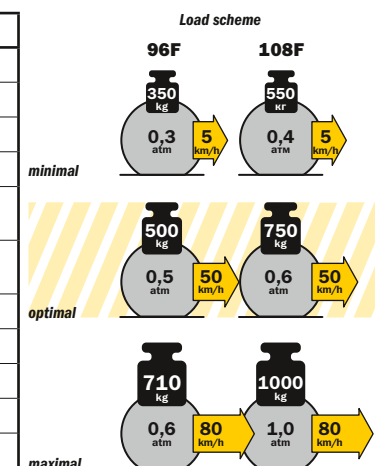
- wide grip area
- self-cleaning tread
- side grouser
- enhanced grouser system



BESTSELLER

M-TRIM tire characteristics

| Tire type | Tubeless, diagonal, low pressure | |
|---|----------------------------------|-----------------|
| Number of layers (speed index) | 2 (96F) | 4 (108F) |
| External size (mm) | 900 | 880 |
| Width (no more than) mm | 450 | 450 |
| Diameter (mm) | 457,2 mm (18") | 457,2 mm (18") |
| Maximum permissible load (kg) at the working pressure (atm) | 710/0,6 | 1000/1,0 |
| Maximum permissible load (kg) at the lowest pressure (atm) | 350/0,3 | 550/0,4 |
| Minimum ground pressure (kg/cm ²) | 0,15 | 0,25 |
| Highest speed (km/h) | 80 | 80 |
| Weight of tubeless tire (kg) | 32 | 36 |
| Working temperature (°C) | -60...+50 | -60...+50 |
| Recommended wheel | 15x18 AVTOROS | 15x18 AVTOROS |



MX-TRIM tires

The increased passability



MX-TRIM tires, thanks to the larger, than in the M-Trim tires, external diameter increase the passability of the vehicle. Tread with an indicated central part provides improved driving control and stability of straight-line motion on hard surfaces. They are intended for use on imported and domestic SUVs and light all-terrain vehicles.

- Indicated central part of the tread
- Asymmetric tread pattern
- Tire external diameter increased up to 1050 mm or 41 inch



X-TRIM tires

For complete off-road conditions



X-TRIM tires have unsaturated tread pattern and 20 mm high grousers, providing high grip characteristics on different kinds of surface: snow, sand, dirt and swamp.

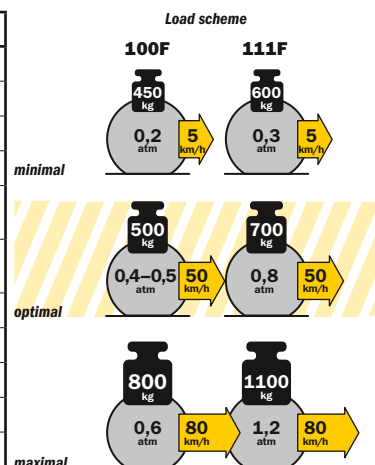
X-TRIM tires have different number of layers – 2 and 4. The more layers the tire has the higher permissible load capacity of the tire.

- High wear resistance
- Super low pressure on soil
- Reinforced sides
- Self-cleaning treads



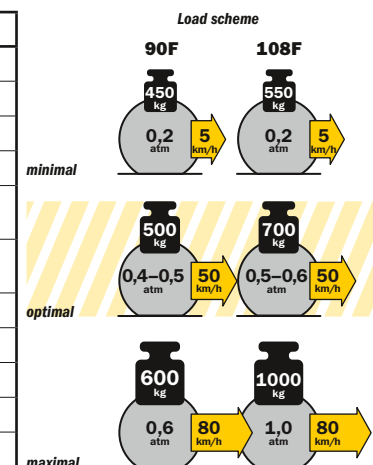
MX-TRIM tire characteristics

| Tire type | Tubeless, diagonal, low pressure | |
|---|----------------------------------|-----------------|
| Number of layers (speed index) | 2 (100F) | 4 (111F) |
| External size (mm) | 1050 | 1030 |
| Width (no more than) mm | 500 | 500 |
| Diameter (mm) | 457,2 mm (18") | 457,2 mm (18") |
| Maximum permissible load (kg) at the working pressure (atm) | 800/0,6 | 1100/1,2 |
| Maximum permissible load (kg) at the lowest pressure (atm) | 450/0,2 | 600/0,3 |
| Minimum ground pressure (kg/cm ²) | 0,15 | 0,25 |
| Highest speed (km/h) | 80 | 80 |
| Weight of tubeless tire (kg) | 42 | 47 |
| Working temperature (°C) | -60...+50 | -60...+50 |
| Recommended wheel | 15x18 AVTOROS | 15x18 AVTOROS |



X-TRIM tire characteristics

| Tire type | Tubeless, diagonal, low pressure | |
|---|----------------------------------|-----------------|
| Number of layers (speed index) | 2 (90F) | 4 (108F) |
| External size (mm) | 1250 | 1230 |
| Width (no more than) mm | 600 | 600 |
| Diameter (mm) | 533,4 mm (21") | 533,4 mm (21") |
| Maximum permissible load (kg) at the working pressure (atm) | 600/0,6 | 1000/1,0 |
| Maximum permissible load (kg) at the lowest pressure (atm) | 450/0,2 | 550/0,2 |
| Minimum ground pressure (kg/cm ²) | 0,15 | 0,25 |
| Highest speed (km/h) | 80 | 80 |
| Weight of tubeless tire (kg) | 49 | 56 |
| Working temperature (°C) | -60...+50 | -60...+50 |
| Recommended wheel | 19x21 AVTOROS | 19x21 AVTOROS |



S-TRIM tires

For agricultural equipment



S-TRIM tires have the 10 mm high tread and saturated tread pattern that provides high wear resistance on solid surface and protects the topsoil from destruction, due to that they are widely used in agricultural equipment. The saturated tread pattern allows you to move through the snow more effectively.

There are 2 types of **S-TRIM** tires with different numbers of layers – 2 and 4. The more layers the tire has the higher permissible load capacity of the tire.

- High wear resistance
- Reinforced sides
- Ultra-low pressure on soil
- Self-cleaning treads



MAX-TRIM tires

The maximum passability



MAX-TRIM tires with enhanced size and directional pattern of the grouser provide better floatation and passability of the vehicle. The optimal saturation of the grouser pattern and self-cleaning treads keep the tire stable and keep high grip with the surface.

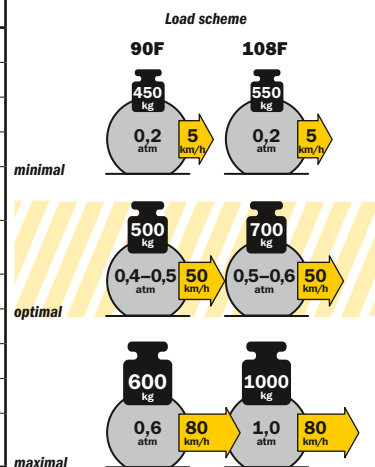
MAX-TRIM tires with 4 layers are available for heavy ATVs weighing more than 4 tons.

- Side grouser
- Self-cleaning treads
- High permissible load
- Low traffic noise



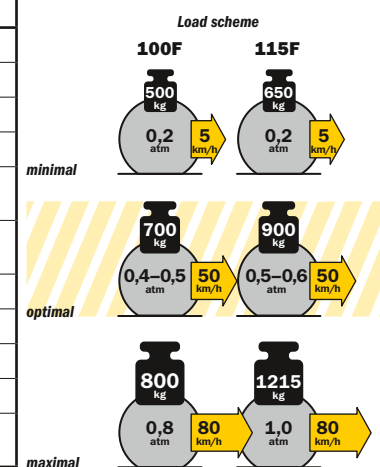
S-TRIM tire characteristics

| Tire type | Tubeless, diagonal, low pressure | |
|---|----------------------------------|-----------------|
| Number of layers (speed index) | 2 (90F) | 4 (108F) |
| External size (mm) | 1250 | 1230 |
| Width (no more than) mm | 600 | 600 |
| Diameter (mm) | 533,4 mm (21") | 533,4 mm (21") |
| Maximum permissible load (kg) at the working pressure (atm) | 600/0,6 | 1000/1,0 |
| Maximum permissible load (kg) at the lowest pressure (atm) | 450/0,2 | 550/0,2 |
| Minimum ground pressure (kg/cm ²) | 0,15 | 0,25 |
| Highest speed (km/h) | 80 | 80 |
| Weight of tubeless tire (kg) | 45 | 52 |
| Working temperature (°C) | -60...+50 | -60...+50 |
| Recommended wheel | 19x21 AVTOROS | 19x21 AVTOROS |



MAX-TRIM tire characteristics

| Tire type | Tubeless, diagonal, low pressure | |
|---|----------------------------------|--------------------------------|
| Number of layers (speed index) | 2 (100F) | 4 (115F) |
| External size (mm) | 1300 | 1280 |
| Width (no more than) mm | 700 | 700 |
| Diameter (mm) | 533,4 mm (21") | 533,4 mm (21") |
| Maximum permissible load (kg) at the working pressure (atm) | 800/0,8 | 1215/1,0 |
| Maximum permissible load (kg) at the lowest pressure (atm) | 500/0,2 | 650/0,2 |
| Minimum ground pressure (kg/cm ²) | 0,15 | 0,25 |
| Highest speed (km/h) | 80 | 80 |
| Weight of tubeless tire (kg) | 59 | 67 |
| Working temperature (°C) | -60...+50 | -60...+50 |
| Recommended wheel | 19x21 AVTOROS 23x21 AVTOROS | 19x21 AVTOROS 23x21 AVTOROS |



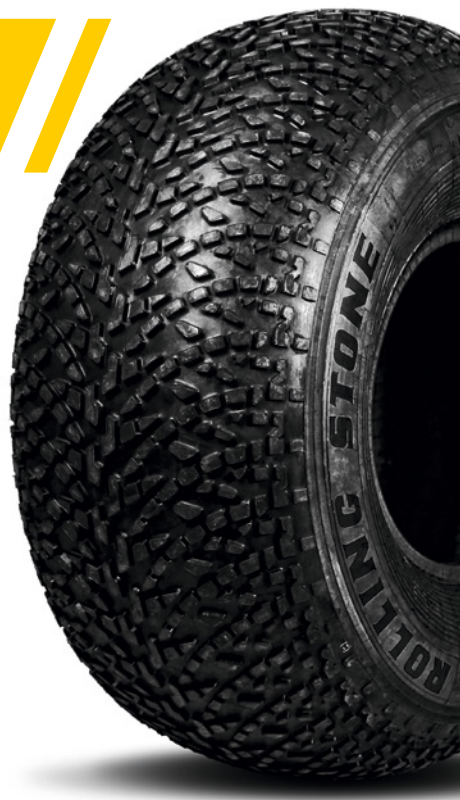
ROLLING STONE tires

For snow and swamp



ROLLING STONE tires have a unique enhanced grouser system and have the largest grip area among the tires of the same type and size. Higher saturation of the tread pattern allows to increase the service life of the tire when using the vehicle on hard ground and public roads.

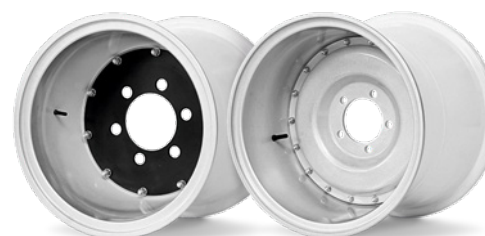
These tires are designed both for light ATVs and on heavy equipment for performing various tasks on soil with the lowest load carrying capacity.



New Product of 2019

Aluminum wheels

Light weight and reliability



We use specially produced serial cast aluminum wheels of the original design, that have such characteristics as light weight, high durability, are easy to install and disassemble.

Thanks to the spacer made of a composite material and the design of the wheel, the tire is firmly fixed with the internal pressure from 0.1 to 1.0 atmospheres. The hub part of the wheel is manufactured in three versions: for UAZ (Niva), GAZ-66 and the hubs for Japanese cars.

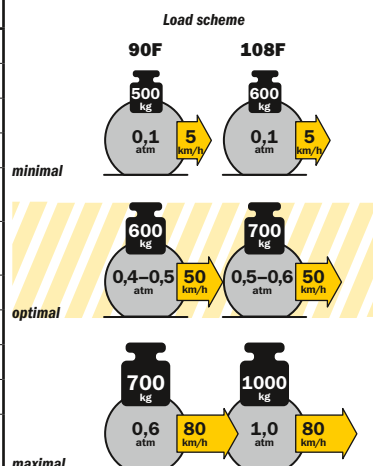
Upon customer's request, the wheels can also be equipped with wheel hubs for Toyota, Nissan, Mitsubishi etc.

- Light weight
- Fast assembly and disassembly of the wheel
- Fit to tire
- High durability



ROLLING STONE tire characteristics

| Tire type | Tubeless, diagonal, low pressure | |
|---|----------------------------------|--------------------------------|
| Number of layers (speed index) | 2 (90F) | 4 (108F) |
| External size (mm) | 1350 | 1330 |
| Width (no more than) mm | 660 | 660 |
| Diameter (mm) | 533,4 mm (21") | 533,4 mm (21") |
| Maximum permissible load (kg) at the working pressure (atm) | 700/0,6 | 1000/1,0 |
| Maximum permissible load (kg) at the lowest pressure (atm) | 500/0,1 | 600/0,1 |
| Minimum ground pressure (kg/cm ²) | 0,15 | 0,20 |
| Highest speed (km/h) | 80 | 80 |
| Weight of tubeless tire (kg) | 48 | 56 |
| Working temperature (°C) | -60...+50 | -60...+50 |
| Recommended wheel | 19x21 AVTOROS 23x21 AVTOROS | 19x21 AVTOROS 23x21 AVTOROS |



AVTOROS aluminum wheels are certified to ensure consistent product quality.

Aluminum wheels characteristics

| Suitable for tire | M-TRIM, MX-TRIM | X-TRIM, S-TRIM, MAX-TRIM, ROLLING STONE | MAX-TRIM, ROLLING STONE |
|----------------------|-----------------|---|-------------------------|
| Landing diameter, mm | 457,2 mm (18") | 533,4 mm (21") | 533,4 mm (21") |
| Rim width, mm | 380 | 490 | 600 |
| Weight, kg | 18 | 27 | 30 |
| ET, mm | 0 | -12 | -62 |
| Index | 15x18 | 19x21 | 23x21 |



Accessories and components

1.



The hub part

The central part of the wheel, that is necessary for mounting the wheel on the axle hub.

Possible options:

PCD – 5x139,7 DIA: 108,6 mm

PCD – 6x139,7 DIA: 110 mm.

Material – aluminum alloy.

2.



Nuts with face-plate

M14x1,5 – 5 pieces for UAZ;

M12x1,5 – 6 pieces for Japanese SUVs.

3.



The hub part for GAZ-66

The central part of the AVTOROS wheel, that is necessary for installation on the hub of GAZ-66 axle. Can also be made to order for any hub.

Material – steel.

4.



Spacer Ring

Inner ring for mounting the tire on the wheel. The ring provides firm fixation of the tire with lowest pressure.

Sealant

Special tire sealant required for Avtoros wheel mounting.

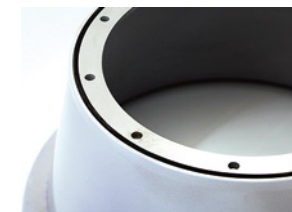
Quantity sufficient for 10–15 wheels.



5.

Sealing rubber bands

A set of rubber bands for 4 wheels, necessary for a more tight connection of the two parts of the rim and prevention of air leakage.



6.

Tire repair kit

Repair kit for tire puncture repair.

Includes: glue, rubber bands, plugs, patches and necessary tools.



7.

Protection cap

Protects automatic pumping hoses and protects the wheel from clogging with dirt. Can be installed on UAZ, Japanese SUVs with PCD – 6x139,7 mm and GAZ-66.

Includes: cap, pin, nut and platform.



8.

Manometer

Specialized pressure gauge for low pressure tires with a low scale down to 1 atmosphere.



9.

*See the full range of accessories and components on our website www.avtoros.info/shop/

**AVTOROS low-pressure tires
usage examples**



Here you can see the photos of ATVs of our customers in 2014-2019.
Send us the pictures of your ATV on Avtoros tires and get a discount,
and the picture of your ATV will be in the next catalog of Avtoros tires and wheels.



**M-TRIM
tires**



**MX-TRIM
tires**



X-TRIM tires



ROLLING STONE tires



S-TRIM tires



MAX-TRIM tires





AVTOROS

*is a dynamically developing company and one of our goals
is a constant modernization and improvement of our goods and services.*



Main office and sales office:

127299, Clara Zetkin street, 4, Moscow

Tel.: 8 (495) 255-52-21

Tel.: 8 (800) 775-86-22

Free call in Russia

Production:

171272, Tver region,

Nekrasova street, 3a

Novozavidovskiy uts

www.avtoros.info
sale@avtoros.info